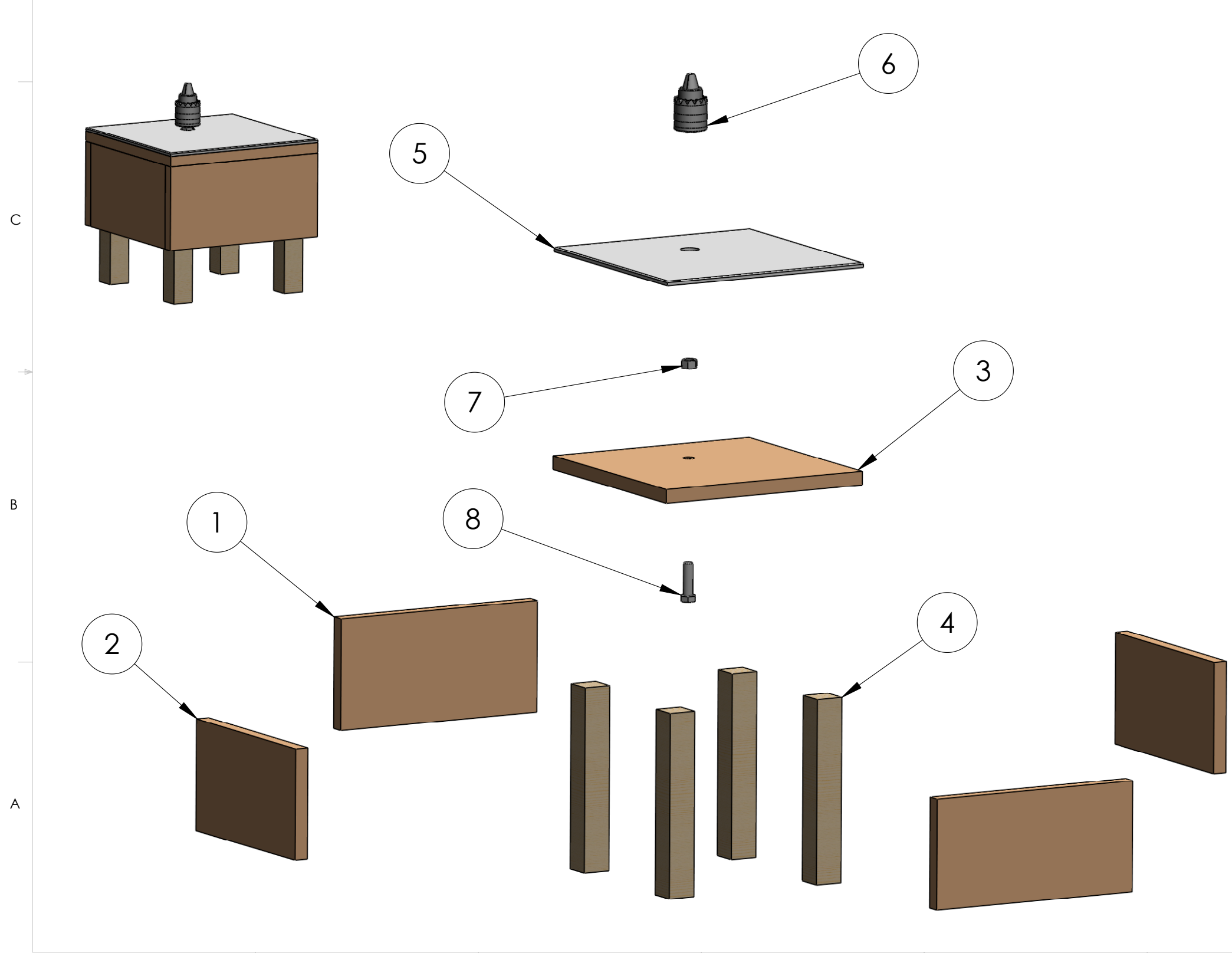



ITEM NO.	PART NUMBER	DESCRIPTION	QTY.
1	F & B PANEL	6" X 12" X 3/4" MDF	2
2	SIDE PANEL	6" X 10-1/2" X 3/4" MDF	2
3	TOP	12" X 12" MDF	1
4	LEG	2 X 2 X 10" PINE	4
5	BLAST SHIELD	12" X 12" CERAMIC FLOOR TILE	1
6	LAUNCH ROD CHUCK	1/2 JACOB'S CHUCK OR KEYLESS CHUCK	1
7		1/2-20 HEX NUT	1
8		1/2-20 X 1-3/4" HEX BOLT	1

REVISIONS		
REV.	DESCRIPTION	DATE
1	RELEASED FOR TOOLING	08/27/2009

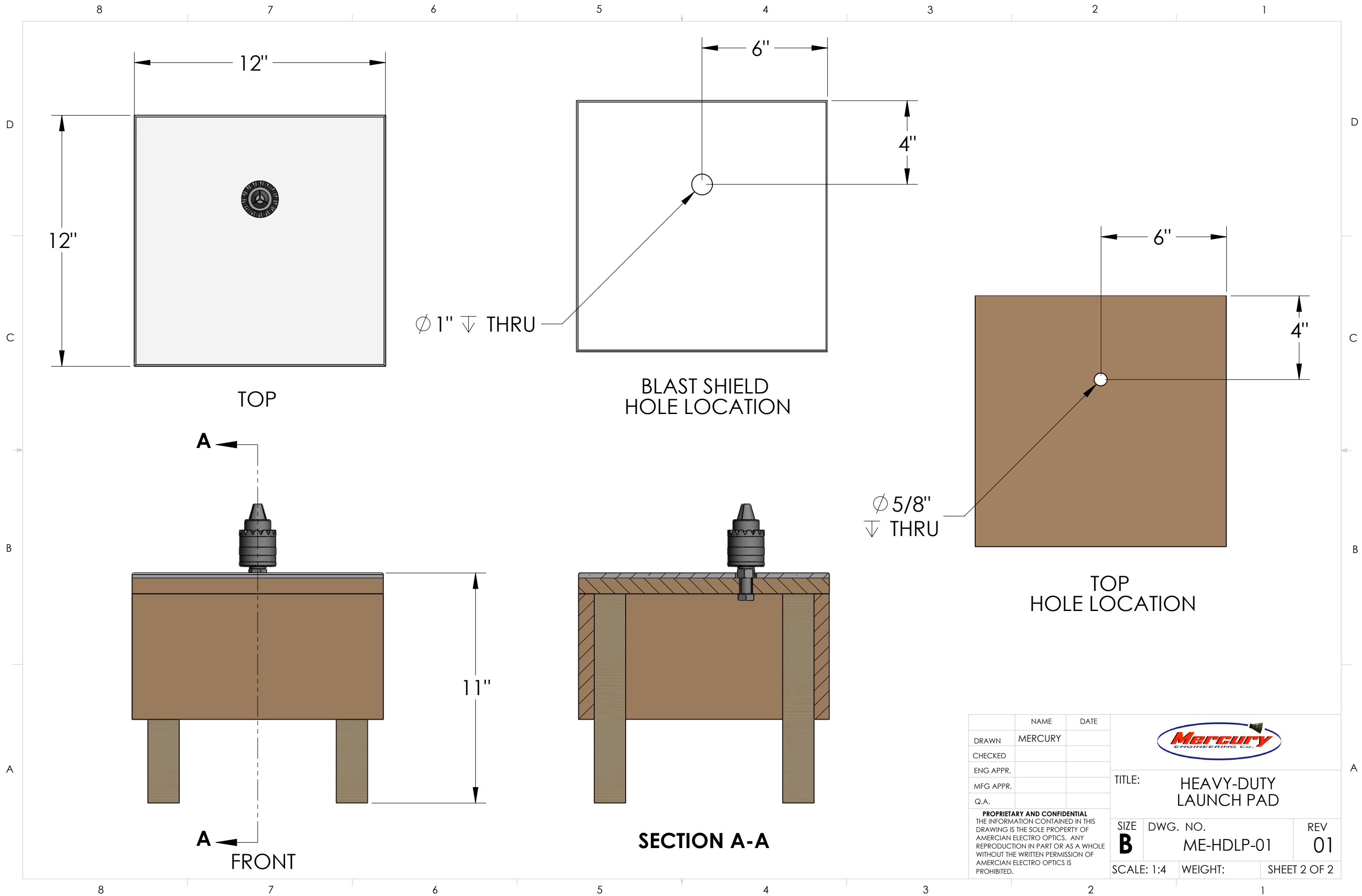


Construction tips:


1. Assemble all of the wood components first and use plenty of wood glue. We used wood glue and an 18-gauge brad nail gun to secure everything together, but finish nails or wood screws will work as well.
2. Sand and paint the launch pad before putting on the ceramic top.
3. The hardest part for us was cutting the 1" hole in the ceramic tile, but with the right diamond tip tools it should go pretty smoothly. If the ceramic does not work for you, you can always substitute a metal plate for the ceramic.
4. We used liquid nail to attach the ceramic tile to the launch pad, but any suitable construction adhesive should do.
5. Once you are finished don't forget to dress it up with your favorite decals.

NAME	DATE	
DRAWN	MERCURY	
CHECKED		
ENG APPR.		
MFG APPR.		
Q.A.		
TITLE:		HEAVY-DUTY LAUNCH PAD
SIZE	DWG. NO.	REV
B	ME-HDLP-01	01
SCALE: 1:6	WEIGHT:	SHEET 1 OF 2

PROPRIETARY AND CONFIDENTIAL
THE INFORMATION CONTAINED IN THIS DRAWING IS THE SOLE PROPERTY OF AMERICAN ELECTRO OPTICS. ANY REPRODUCTION IN PART OR AS A WHOLE WITHOUT THE WRITTEN PERMISSION OF AMERICAN ELECTRO OPTICS IS PROHIBITED.



	NAME	DATE
DRAWN	MERCURY	
CHECKED		
ENG APPR.		
MFG APPR.		
Q.A.		

		
TITLE: HEAVY-DUTY LAUNCH PAD		
SIZE B	DWG. NO. ME-HDLP-01	REV 01
SCALE: 1:4	WEIGHT:	SHEET 2 OF 2

PROPRIETARY AND CONFIDENTIAL
 THE INFORMATION CONTAINED IN THIS DRAWING IS THE SOLE PROPERTY OF AMERICAN ELECTRO OPTICS. ANY REPRODUCTION IN PART OR AS A WHOLE WITHOUT THE WRITTEN PERMISSION OF AMERICAN ELECTRO OPTICS IS PROHIBITED.